

GRANDEUR OF 6 FAMOUS EMPIRES
DISCOVERS YOUR HOME

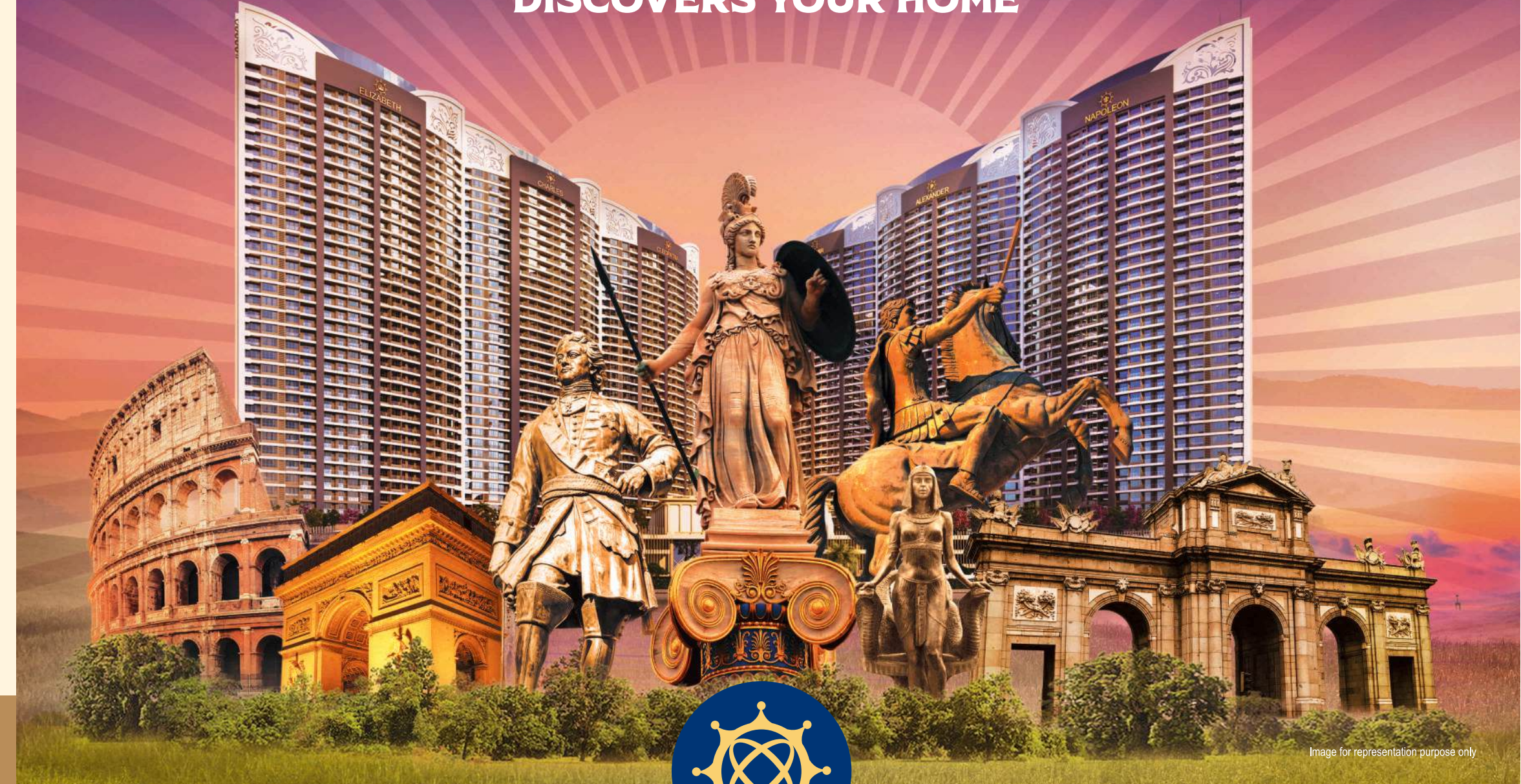


Image for representation purpose only



MahaRERA Reg. No. PHASE I - P51700002446,
 Phase II - P52000026796, PHASE III - P52000029168
 PHASE IV - P52000051836, <https://maharera.mahaonline.gov.in>

- Architect
Hiten Sethi & Asso.
- Interior Consultant
Vini & Asso.
- Landscape Architect
Newarch Landscapes LLP
- RCC Consultant
Mahimtura Consultants Pvt. Ltd.
- MEP Consultant
Anil Verma & Asso.



SAI
WORLD EMPIRE
KHARGHAR

Site Office: Paradise Superstructures, Sai World Empire, Opp. Kharghar Valley Shilp (CIDCO Colony), Kharghar, Navi Mumbai
Corp. Office: 1701, Satra Plaza, Plot No. 19 & 20, Sector - 19 D, Vashi, Navi Mumbai - 400 705
Tel.: 022 2783 1000 / 2783 9000 | **Email:** enquiry@paradisegroup.co.in | **Web:** www.saiworldempire.net
www.paradisegroup.co.in | Follow us on:

**A LUXURY KINGDOM INSPIRED BY
THE LIVES OF FAMOUS KINGS & QUEENS**



**JULIUS
CAESAR**
OF ROMAN
EMPIRE

TOWER 1



**ALEXANDER
THE GREAT**
OF GREEK
EMPIRE

TOWER 2



**NAPOLEON
BONAPARTE**
OF FRENCH
EMPIRE

TOWER 3



**QUEEN
CLEOPATRA**
OF EGYPTIAN
EMPIRE

TOWER 4



**KING
CHARLES-I**
OF SPANISH
EMPIRE

TOWER 5



**QUEEN
ELIZABETH**
OF BRITISH
EMPIRE

TOWER 6

6 EMPIRES, 6 LIFESTYLES
1 MODERN KINGDOM

PROJECT HALLMARKS

 18 Acre Kingdom

 2, 3 & 4 BHK Luxury Homes

 6 Magnificent Towers

 2000+ Royal Residences

 46 Storeyed Towers

 Themed Landscape Spread Across Acres On Podium

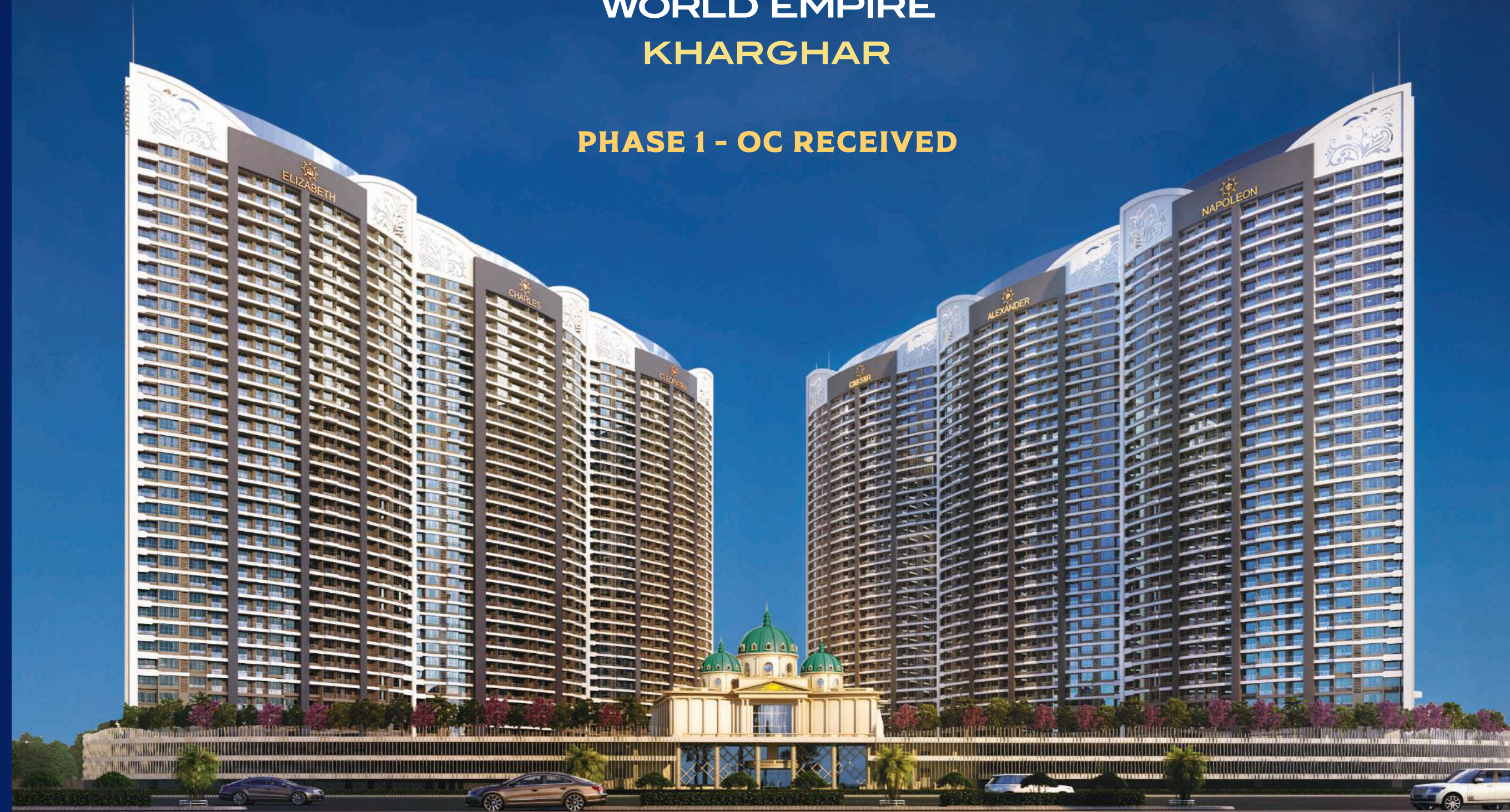
 Grand Club Athena

 G+2 Storeyed Paradise Mall



SAI
WORLD EMPIRE
KHARGHAR

PHASE 1 - OC RECEIVED



**AN ADDRESS FOR KINGS &
QUEENS WHO LIKE TO STAY CONNECTED
TO THE WORLD & BEYOND.**

Nestled amidst the best of nature and future, Kharghar today has transformed into a haven for the modern day kings and queens. It has become a coveted address for the rich and famous, drawn by its luxurious high-rises overlooking verdant hills.

Connectivity reigns supreme in Kharghar. The Mumbai-Pune Expressway and Sion-Panvel Highway whisk residents to the heart of Mumbai, while the upcoming Navi Mumbai International Airport (NMIA) promises seamless global access. The majestic Mumbai Trans Harbour Link (MTHL) bridges the Thane Creek, and the planned Metro line will further weave Kharghar into Mumbai's most convenient transportation hub. With futuristic infrastructure and an air of exclusivity, Kharghar has redefined luxury living in Navi Mumbai. It's a city where convenience meets serenity, a privileged address for those who seek to live life king size.

CONVENIENCES & CONNECTIVITY

- Amandoot Metro Station - 2 Mins
- Kharghar-Turbhe Link Road (KTLR) - 2 Mins
- Iskcon Temple - 5 Mins
- Kharghar Central Park - 5 Mins
- Navi Mumbai Corporate Park (Next BKC) - 5 Mins

- Schools, Malls, Multiplexes, Hotels, Hospitals & Banks Etc. - 5 Mins
- 18 Hole Kharghar Valley Golf Course - 5 Mins
- Mumbai-Pune Expressway - 15 Mins
- Navi Mumbai International Airport - 25 Mins
- Mumbai Trans Harbour Link (MTHL) - 25 Mins

LANDMARKS IN PROXIMITY



Navi Mumbai International Airport



ISKCON Temple



Upcoming Navi Mumbai Corporate Park



Entertainment Centres 'Utsav Chowk' & 'Shilp Chowk'



18 Hole Kharghar Valley Golf Course



Kharghar Central Park

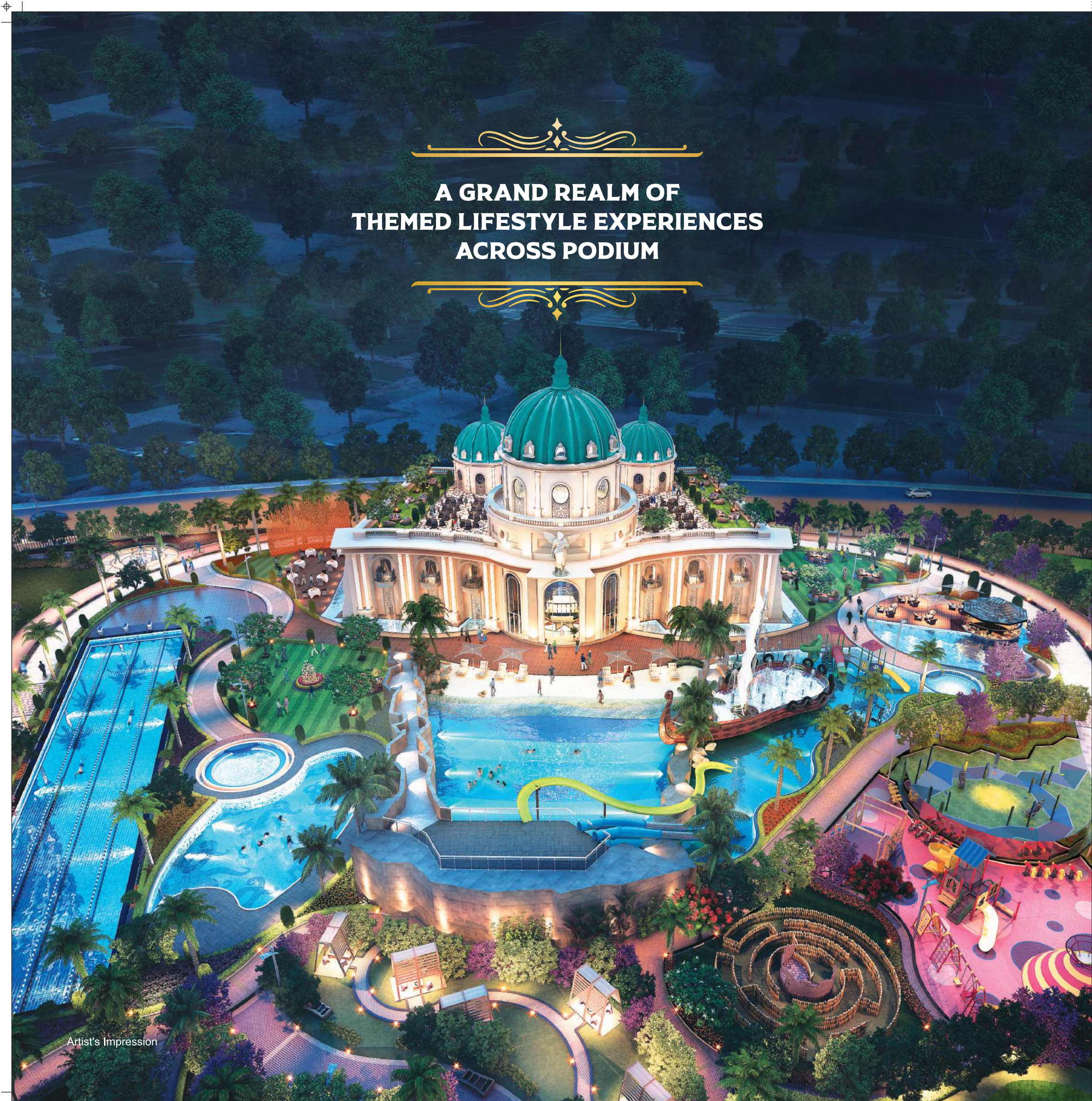
LOCATION MAP





EXPERIENCE
**KHARGHAR'S MOST
LUXURIOUS KINGDOM BRINGING
THE BEST OF HEALTH, WELLNESS,
ENTERTAINMENT, SPORTS
AND RECREATION**

**A GRAND REALM OF
THEMED LIFESTYLE EXPERIENCES
ACROSS PODIUM**



**FEATURING
6 ROYAL LIFESTYLE AMENITIES THAT BEFIT
THE MODERN DAY KINGS AND QUEENS LIKE YOU**



THE COLOSSEUM DOME
INSPIRED BY THE ROYALTY OF
KING JULIUS CAESAR OF ROMAN EMPIRE



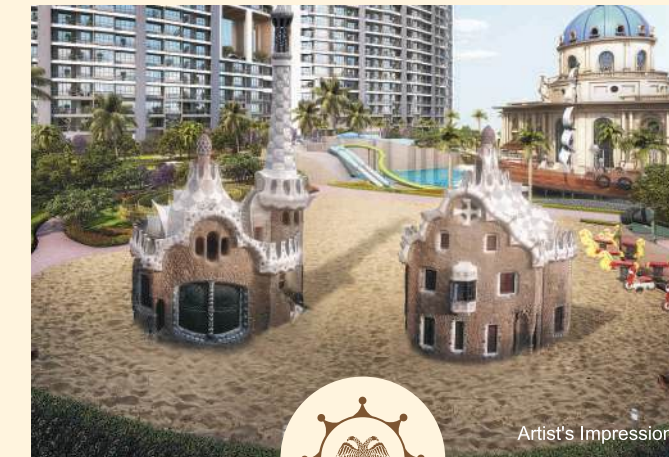
CLUB ATHENA
INSPIRED BY THE GRANDEUR OF
KING ALEXANDER THE GREAT OF GREEK EMPIRE



GRAND ENTRANCE
INSPIRED BY ARCH DE TRIUMPH THAT WELCOMED
KING NAPOLEON BONAPARTE OF FRENCH EMPIRE



ASWAN SPA
INSPIRED BY ROYAL INDULGENCES OF
QUEEN CLEOPATRA OF EGYPTIAN EMPIRE



ESPANA KIDS PARK
INSPIRED BY GAUDI ARCHITECTURE &
LIFESTYLE OF KING CHARLES-I OF SPANISH EMPIRE



THE BROADWAY AMPHITHEATRE
INSPIRED BY ICONIC AMPHITHEATRE & ROYALISM OF
QUEEN ELIZABETH OF BRITISH EMPIRE



LEISURE POOL WITH FLOATING BAR

Artist's Impression



FLOODLIT MULTIPURPOSE COURT

Artist's Impression



MAJESTIC PARTY LAWN FOR CELEBRATIONS

Artist's Impression

**EXPERIENCE ROYAL LIVING
SPREAD ACROSS ACRES
OF LANDSCAPED PODIUM GARDEN
WITH MESMERIZING VIEWS
AND NATURAL SURROUNDINGS**



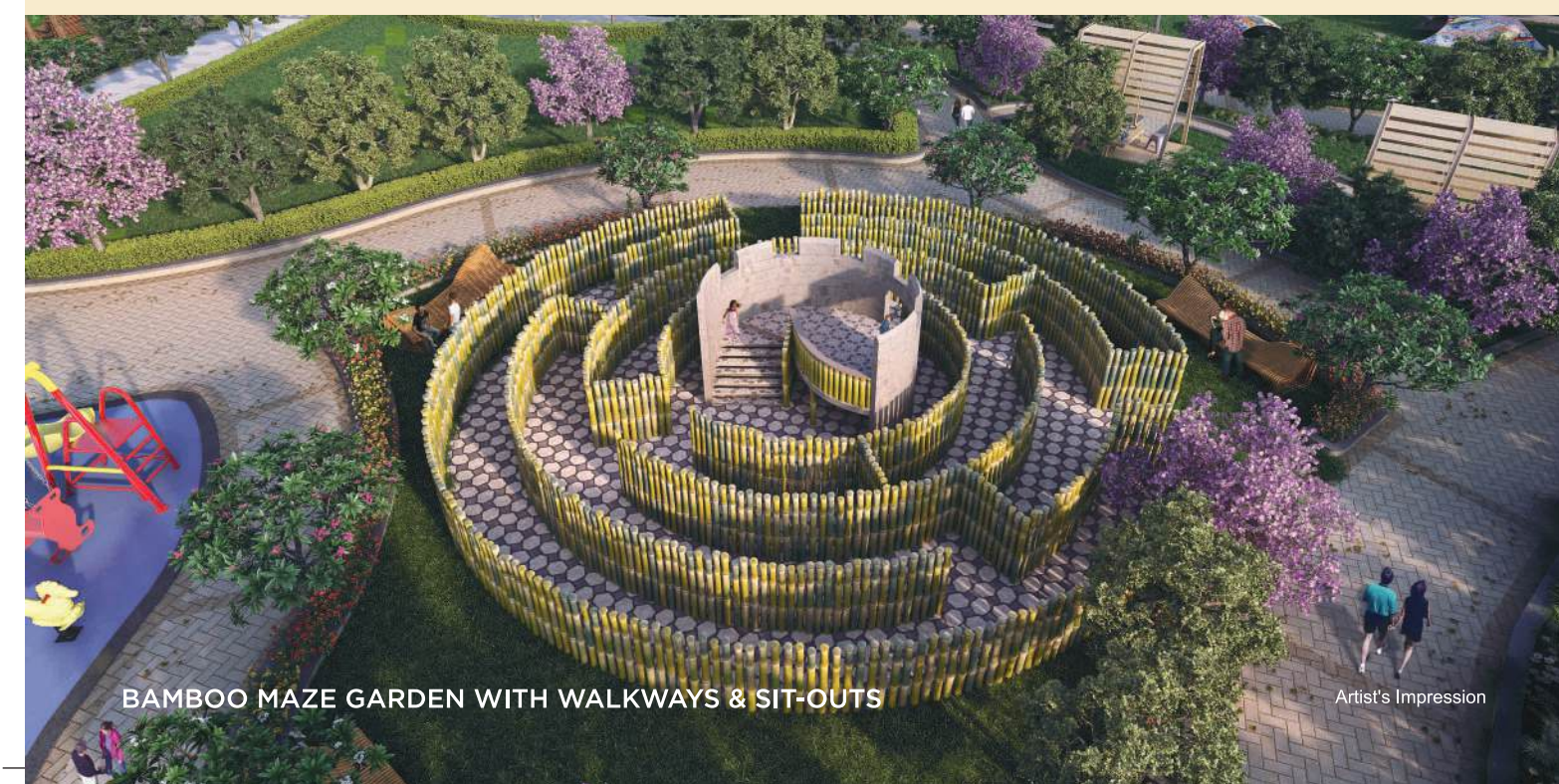
SOOTHING WATER BODIES &
DESIGNER SCULPTURES WITH DUCK POND

Artist's Impression



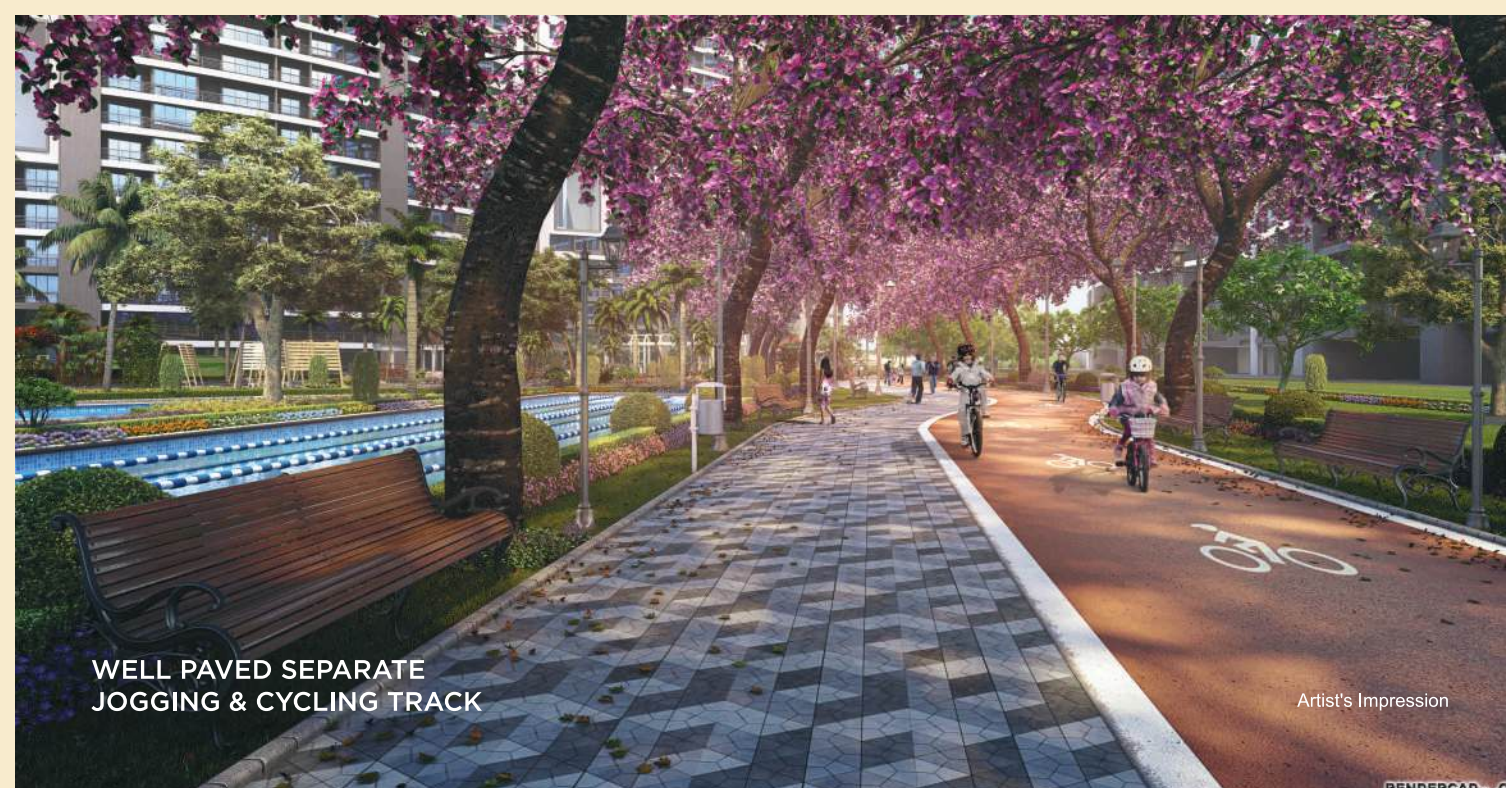
WAVE POOL WITH LOUNGERS, SIT-OUTS & RAIN DANCE SHIP

Artist's Impression



BAMBOO MAZE GARDEN WITH WALKWAYS & SIT-OUTS

Artist's Impression



WELL PAVED SEPARATE
JOGGING & CYCLING TRACK

Artist's Impression



THEMED GARDENS WITH PET PARK

Artist's Impression

LET THE GRANDEUR OF
GREEK KINGDOM BECOME YOUR
BEST PLACE OF CELEBRATIONS



CLUB ATHENA

BY THE BEACH SIDE
60,000 SQ. FT.

BASEMENT AREA

- Badminton Court
- Squash Court

GROUND FLOOR

- Dashing Car Zone
- Virtual Gaming Arena
- Bowling Alley
- Discotheque
- Viewing Gallery
- Fish Aquarium

FIRST FLOOR

- Salon
- Card Room
- Pool Tables
- Chess Court
- Snooker
- Indoor Games

SECOND FLOOR

- Auditorium & Movie Theater
- Library
- Painting, Clay & Fine-art Gallery
- Music Learning Room
- Dance Learning Room

THIRD FLOOR

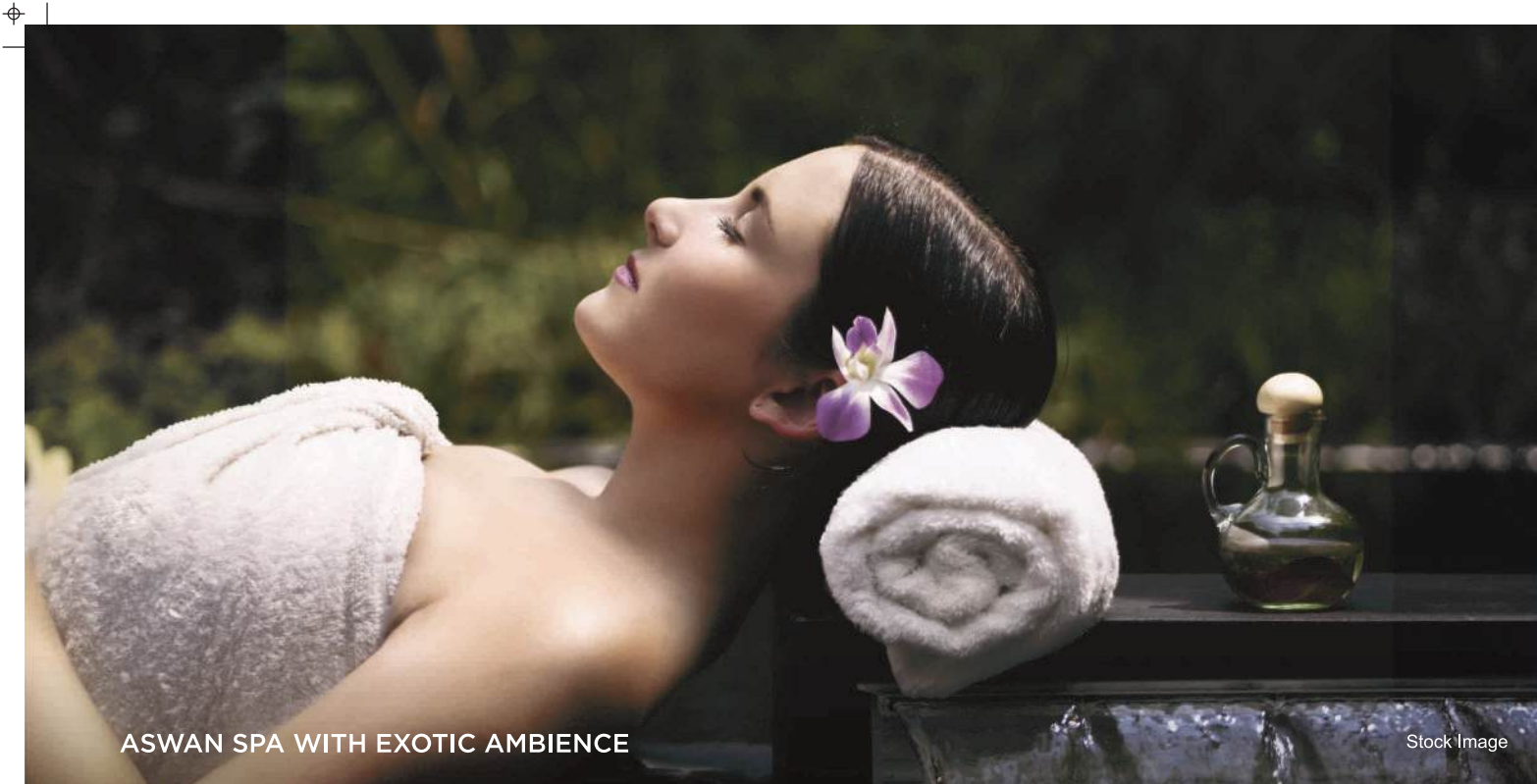
- Banquet Hall
- Pre Function Area
- Meditation Zone
- Children's Day Care Zone

FOURTH FLOOR

- Rope Yoga Zone
- Aerobics and Zumba
- Crossfit
- Massage Room
- Steam & Sauna
- Jacuzzi

FIFTH FLOOR

- AC Restaurant & Open-Air Venetian-Styled Cafeteria



ASWAN SPA WITH EXOTIC AMBIENCE

Stock Image



CHILDREN'S DAY CARE ZONE

Stock Image



ROPE YOGA ZONE

Stock Image



MODERN GYMNASIUM WITH TRAINER

Artist's Impression



WORLD CLASS PRIVATE THEATRE

Stock Image



INDOOR BADMINTON COURT

Stock Image



BOWLING ALLEY

Stock Image

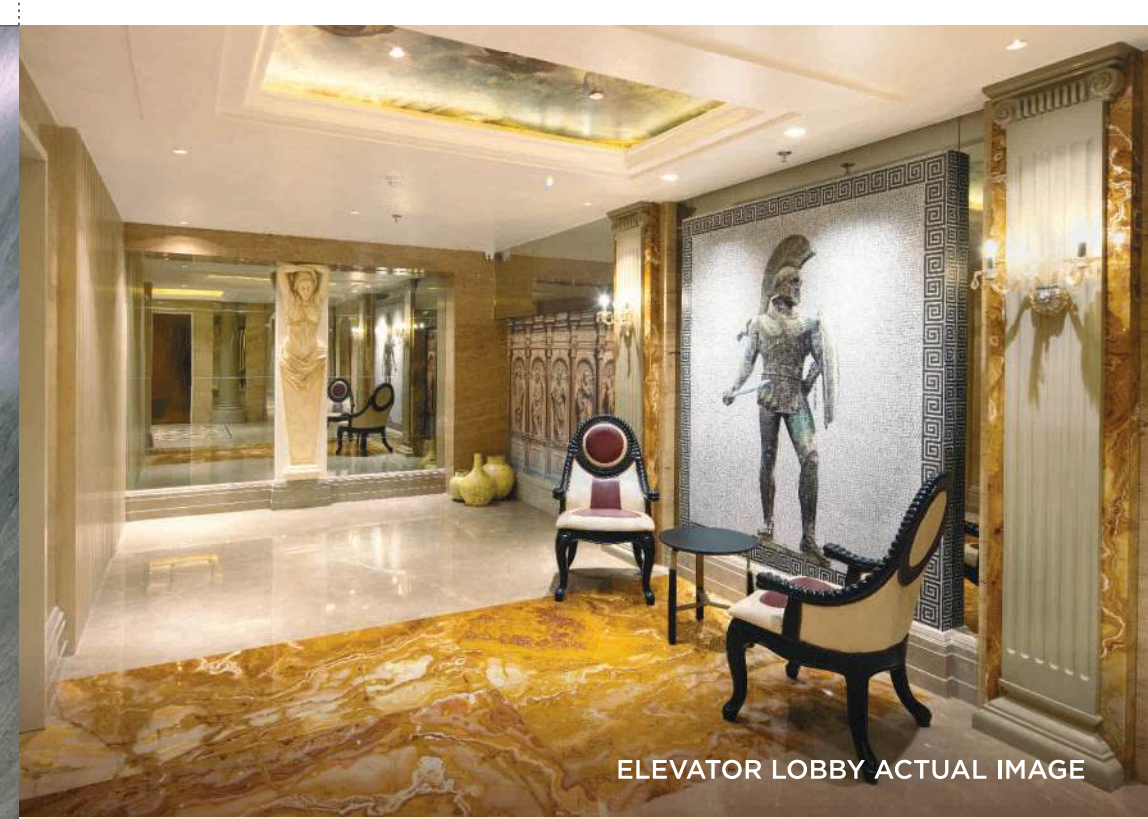


TERRACE CAFETERIA

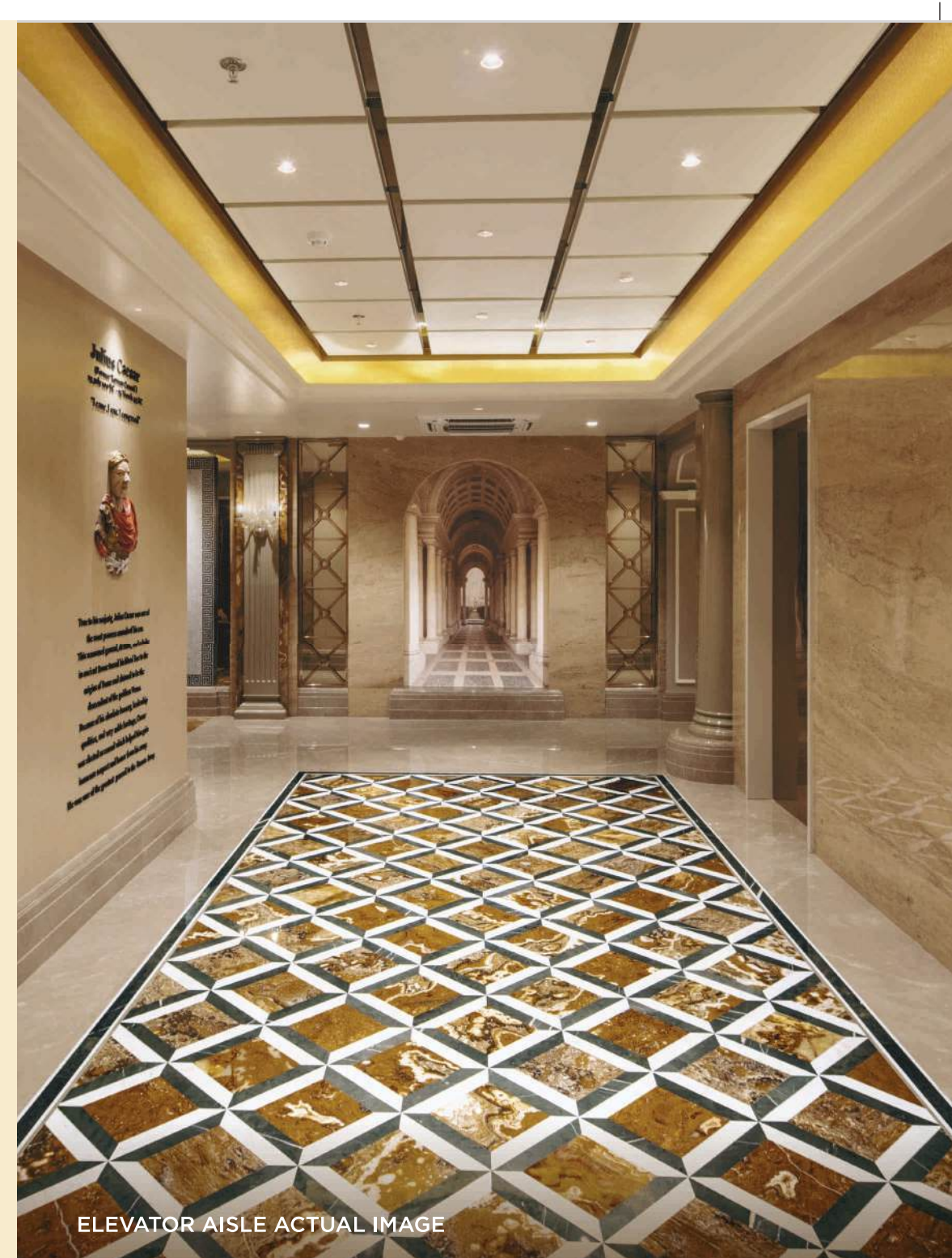
Stock Image



ACTUAL LOBBY IMAGE OF CAESAR TOWER - ROMAN EMPIRE



ELEVATOR LOBBY ACTUAL IMAGE



ELEVATOR AISLE ACTUAL IMAGE



WISHING FOUNTAIN ACTUAL IMAGE



DECORATIVE CEILING ACTUAL IMAGE

**6 MAGNIFICENT TOWERS
SPREAD ACROSS 18 ACRES**



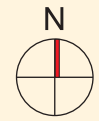
MASTER PLAN

- | | |
|------------------------------|---|
| 1. GRAND ENTRY | 36. KIDS POOL |
| 2. RAMPWAY | 37. SHIP-SHAPED RAIN-DANCE AREA |
| 3. FOOTBALL COURT | 38. AMENITIES IN STILT AREA |
| 4. SPECTATORS PAVILION | 39. POOL LOUNGERS |
| 5. LANDSCAPED GREENS | 40. SANDY BEACH |
| 6. DECORATIVE PLANTATIONS | 41. BEACH SWING |
| 7. TREE COURTYARD | 42. WAVE POOL |
| 8. THEMED SCULPTURE | 43. SUNKEN BAR |
| 9. DESIGNER PATHWAY | 44. LEISURE POOL |
| 10. DECORATIVE FLOOR | 45. SKATING RINK |
| 11. BUILDING EDGE PLANTATION | 46. FLOATING STEPS |
| 12. THEMED COVE | 47. JACUZZI WITH HOT WATER JETS |
| 13. PAVED WALKWAY | 48. OLYMPIC SIZE LAP POOL |
| 14. TRAMPOLINE PARK | 49. SWINGS |
| 15. CYCLING TRACK | 50. CELEBRATION LAWN |
| 16. JOGGING TRACK | 51. GREEN HILLOCK |
| 17. CLOISTER | 52. STEPPED SIT-OUTS |
| 18. AMPHI PLAZA | 53. DESIGNER PLANTERS |
| 19. PAVED AREA | 54. CLUB HOUSE ENTRY WITH DESIGNER FOUNTAIN |
| 20. COLOSSEUM AMPHITHEATER | 55. LEDGE SEATINGS |
| 21. REFLEXOLOGY PATH | 56. OPEN-AIR GYM WITH EQUIPMENTS |
| 22. GROUP SIT OUT | 57. CRICKET PITCH |
| 23. CONNECTOR PATHWAY | 58. SAFETY NET |
| 24. GAZEBO | 59. REGAL FOUNTAIN |
| 25. GREEN HILLOCK | 60. MINI GOLF LAWN |
| 26. DUCK POND | 61. GREEN LAWN WITH PITS |
| 27. SAND STREAM | 62. GRAND DIAS |
| 28. STEPPING STONE | 63. PAVILIONS |
| 29. BRIDGE | 64. DESIGNER COVE |
| 30. LEISURE LAWN | 65. GYMKHANA GREENS |
| 31. BARBEQUE LAWN | 66. LIFT LOBBIES |
| 32. MAZE GARDEN | 67. KIDS PLAY AREA |
| 33. POOLSIDE DECK | |
| 34. FUN POOL | |
| 35. STEPPED PATHWAY | |

**TYPICAL FLOOR PLAN
TOWER - 1 - CAESAR
TOWER - 3 - NAPOLEON**

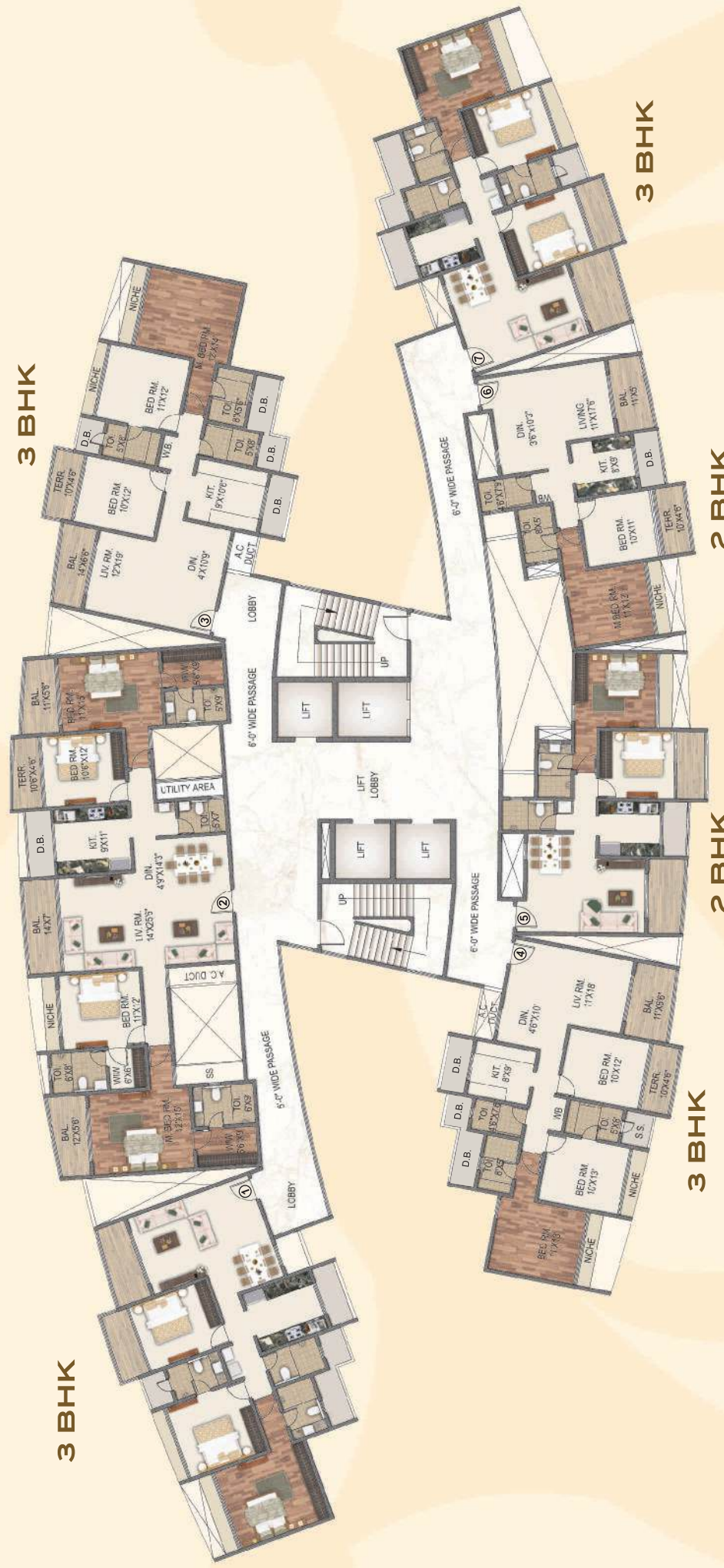
EVEN FLOOR

ODD FLOOR



HILL VIEW

4 BHK



3 BHK

3 BHK

2 BHK

2 BHK

PODIUM VIEW

3 BHK

HILL VIEW

4 BHK

3 BHK

3 BHK

3 BHK

2 BHK

2 BHK

PODIUM VIEW

3 BHK

3 BHK



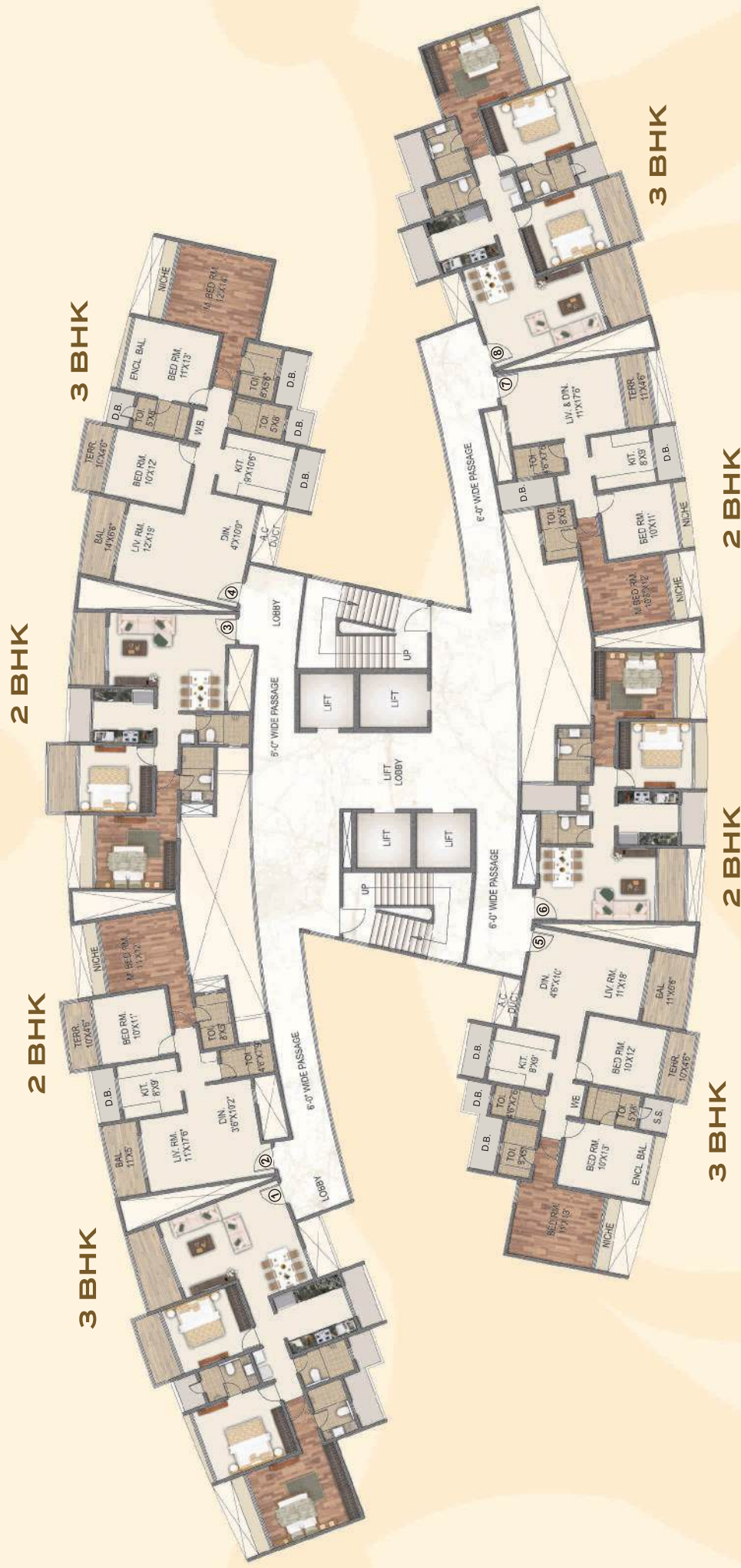
TYPICAL FLOOR PLAN
TOWER - 2 - ALEXANDER

EVEN FLOOR

ODD FLOOR



HILL VIEW



2 BHK

2 BHK

3 BHK

3 BHK

3 BHK

2 BHK

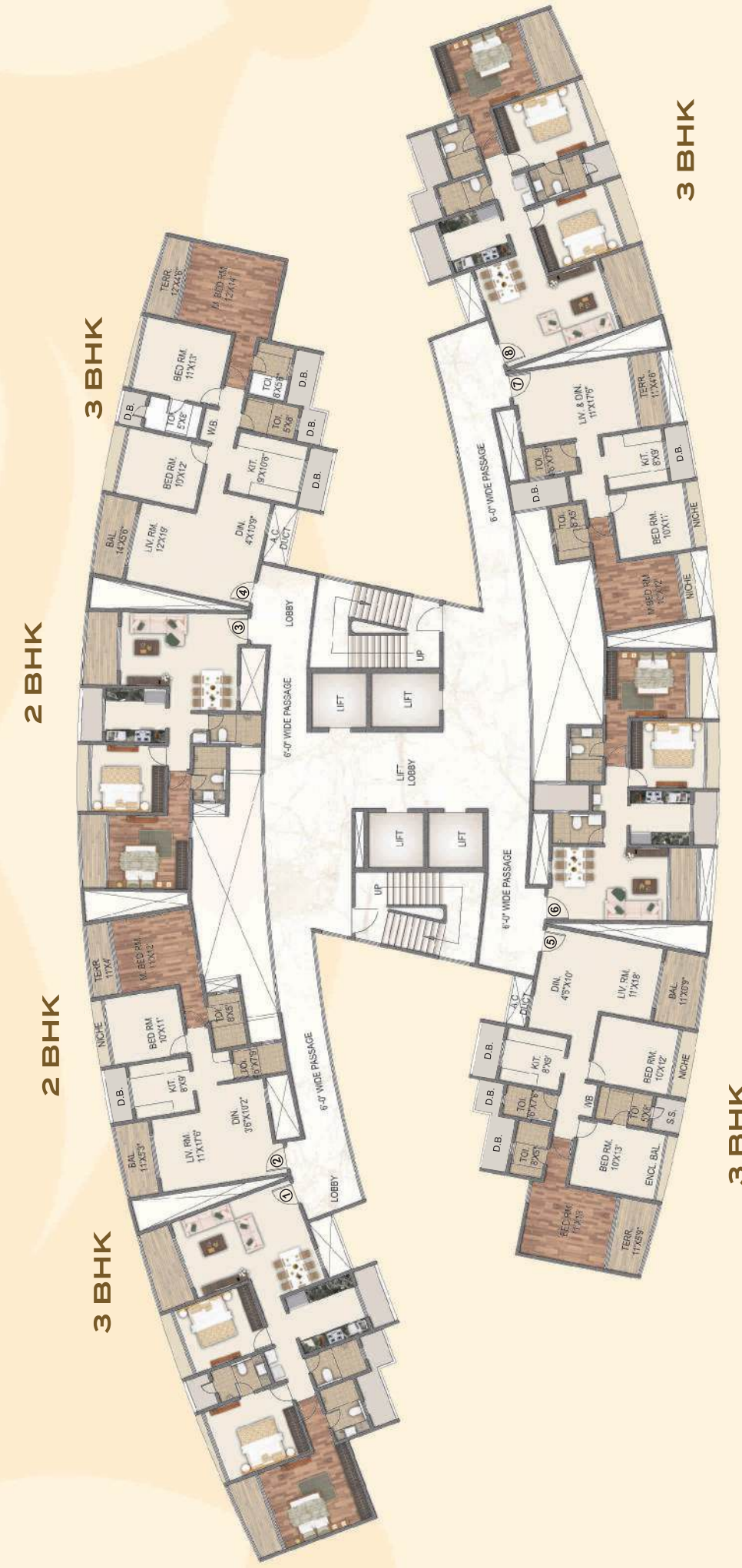
2 BHK

3 BHK

PODIUM VIEW



HILL VIEW



2 BHK

2 BHK

3 BHK

3 BHK

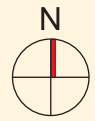
3 BHK

2 BHK

2 BHK

3 BHK

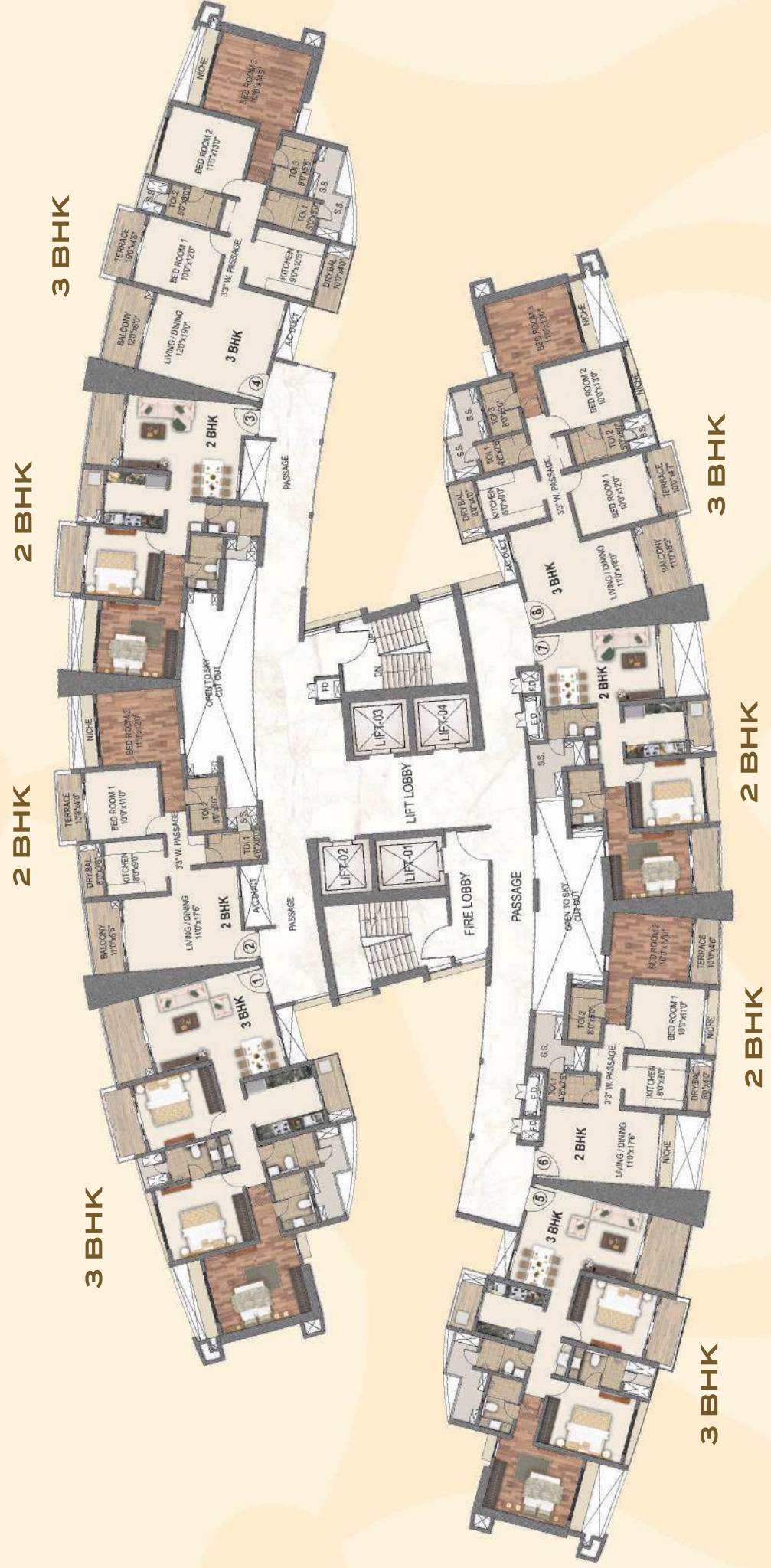
PODIUM VIEW



TYPICAL FLOOR PLAN
TOWER - 4 - CLEOPATRA

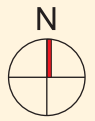
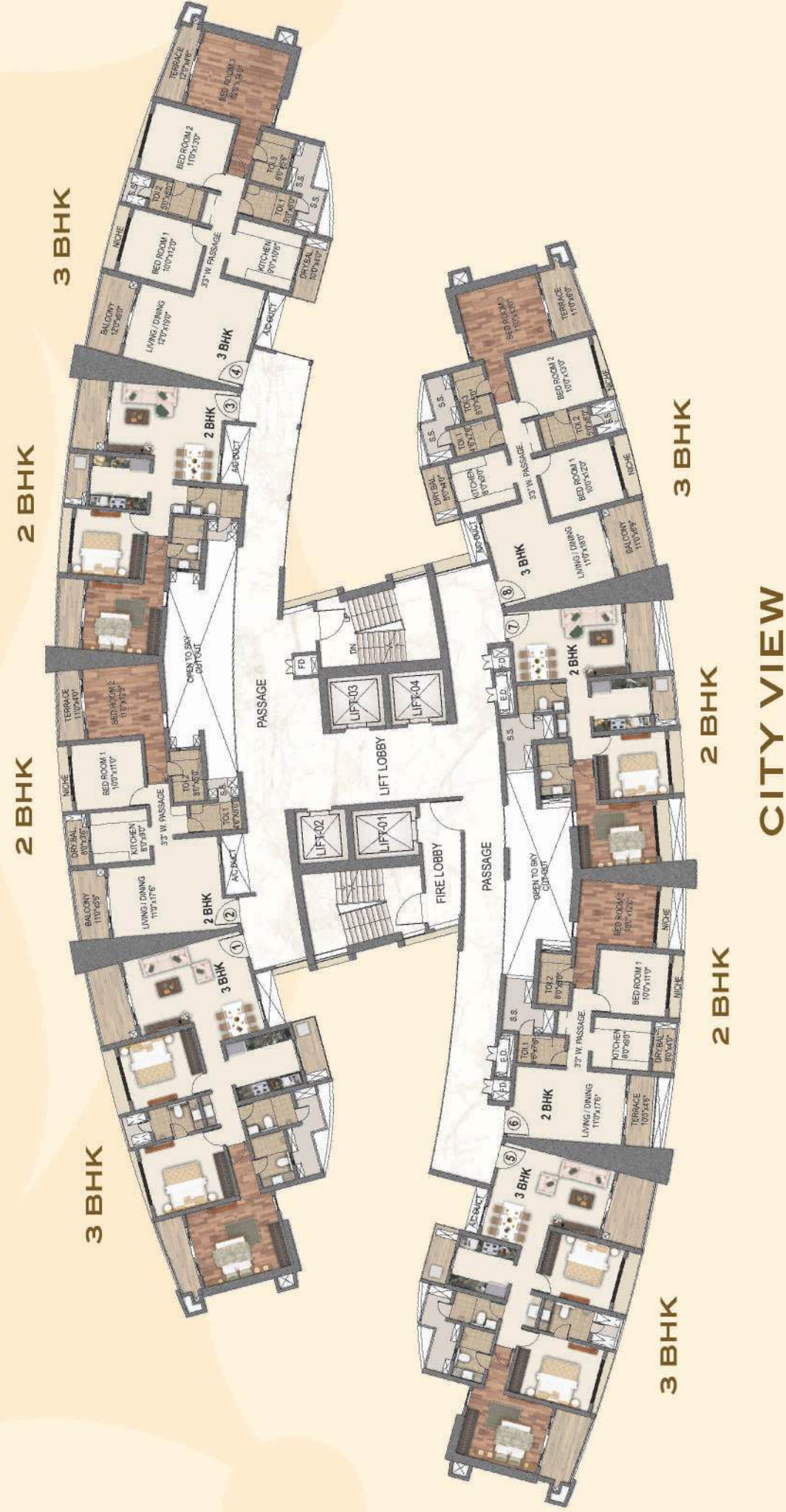
EVEN FLOOR

PODIUM VIEW



ODD FLOOR

PODIUM VIEW

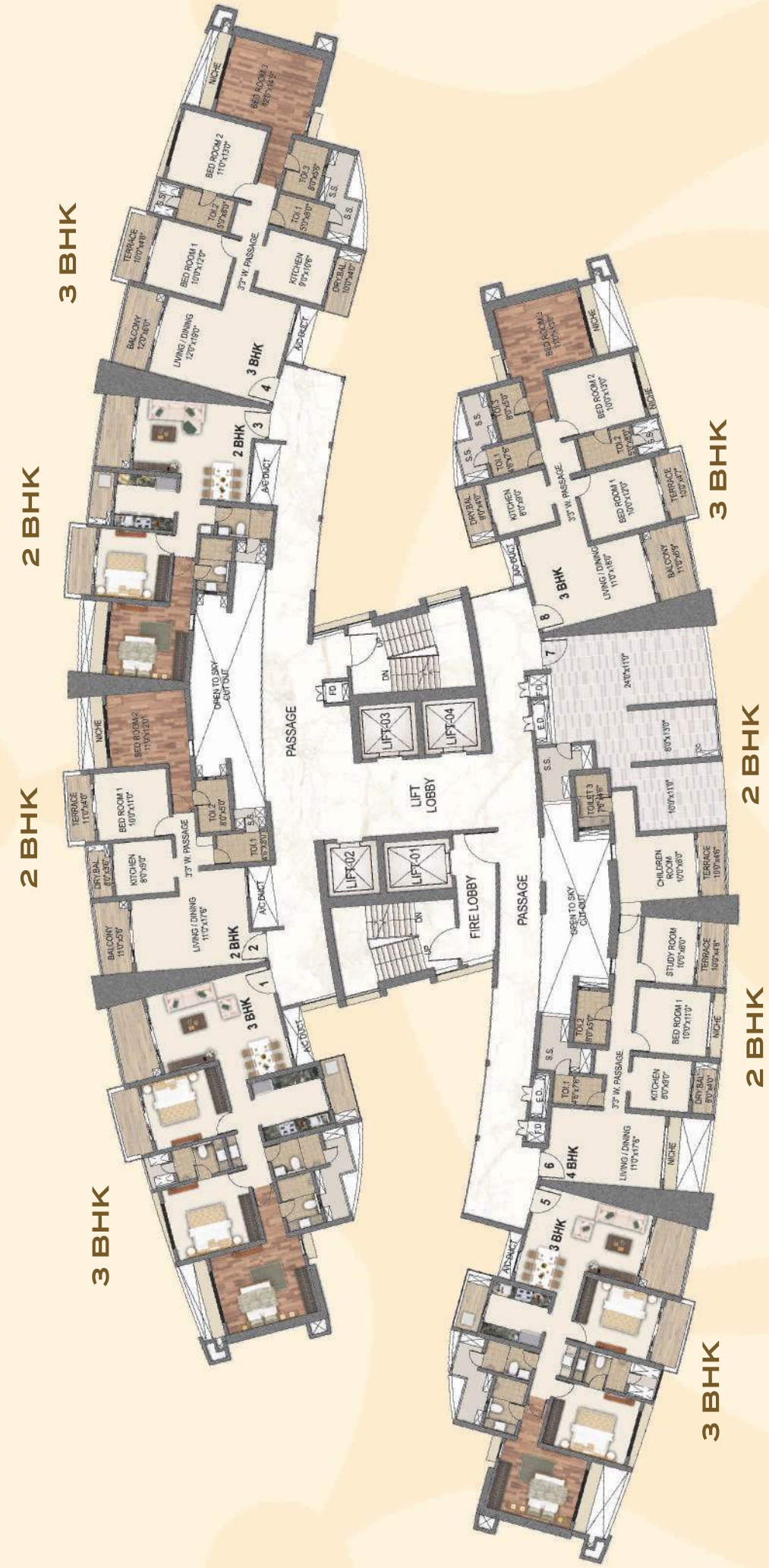


REFUGE FLOOR PLAN
TOWER - 4 - CLEOPATRA

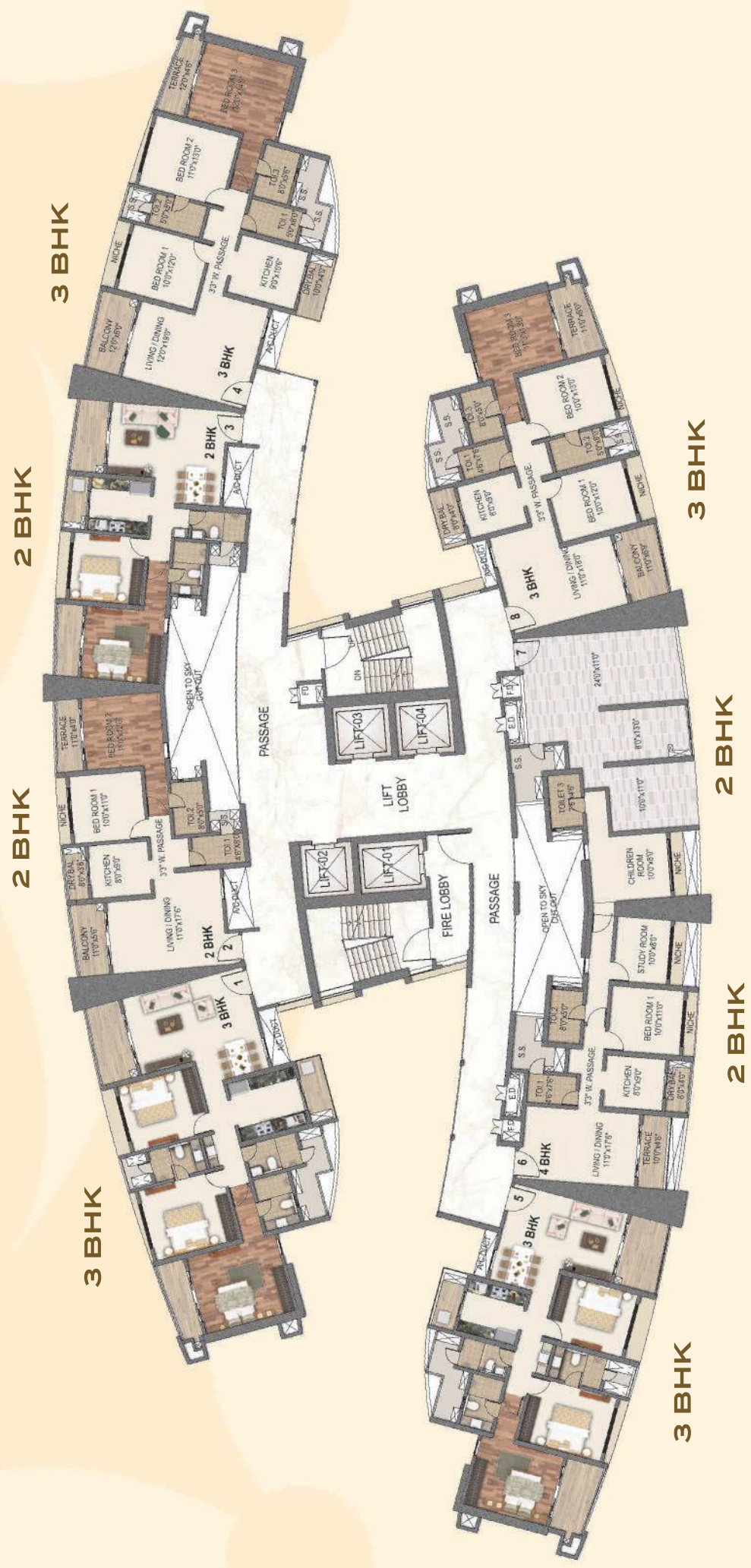
EVEN FLOOR

ODD FLOOR

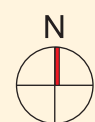
PODIUM VIEW



PODIUM VIEW



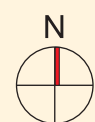
CITY VIEW



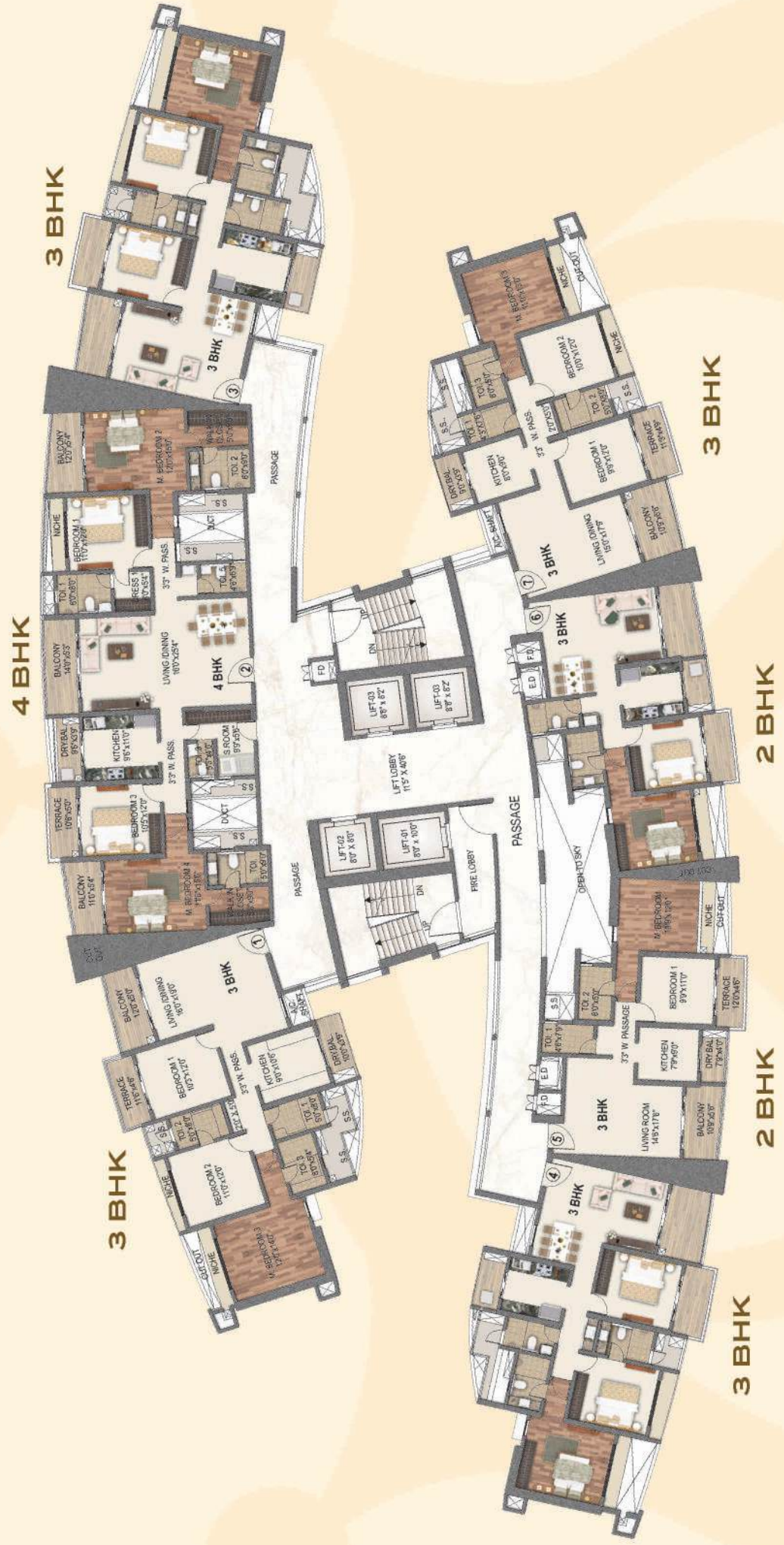
**TYPICAL FLOOR PLAN
TOWER - 5 - CHARLES
TOWER - 6 - ELIZABETH**

EVEN FLOOR

ODD FLOOR

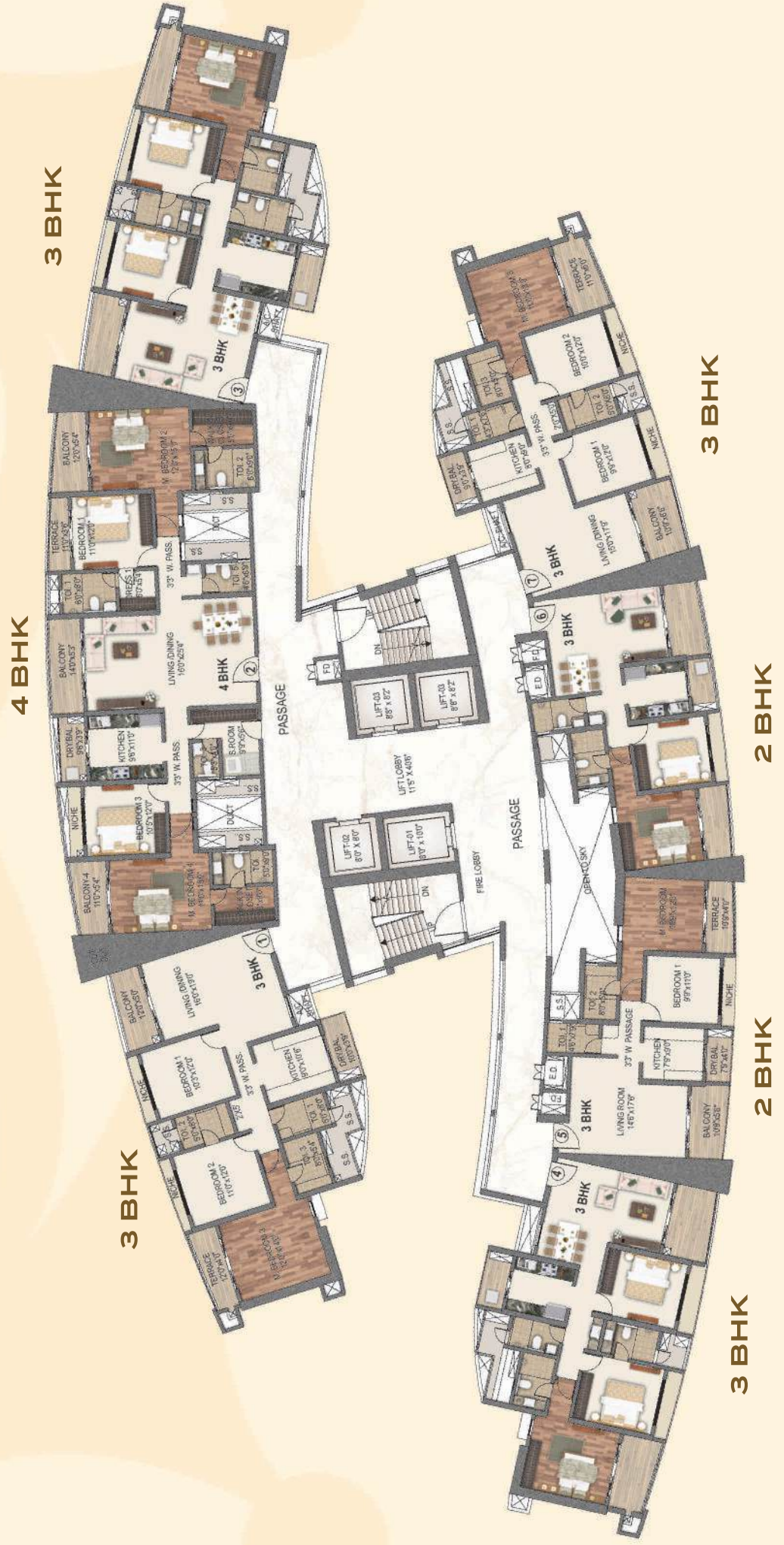


PODIUM VIEW



CITY VIEW

PODIUM VIEW



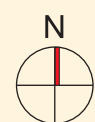
CITY VIEW



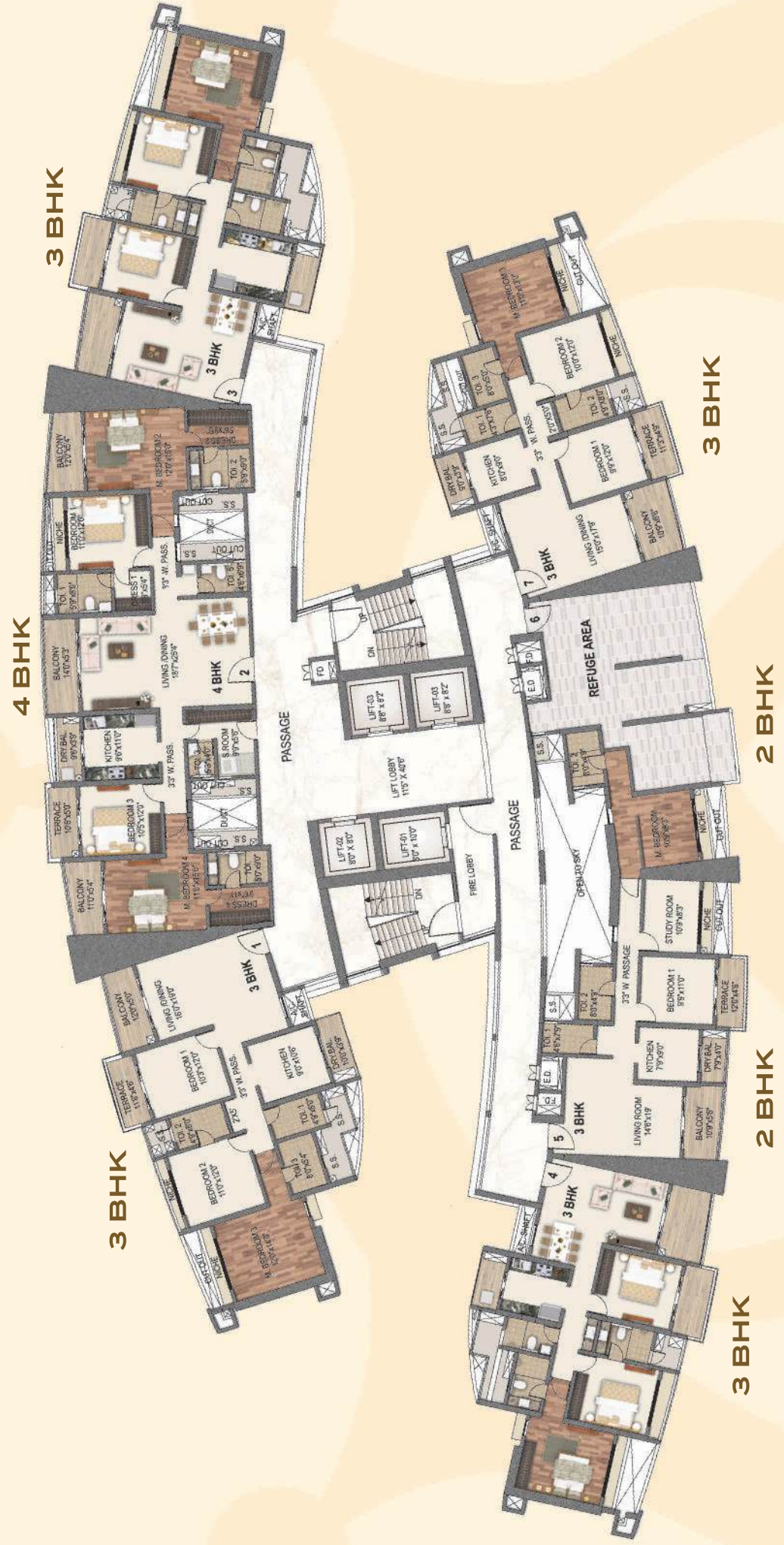
**REFUGE FLOOR PLAN
TOWER - 5 - CHARLES
TOWER - 6 - ELIZABETH**

EVEN FLOOR

ODD FLOOR

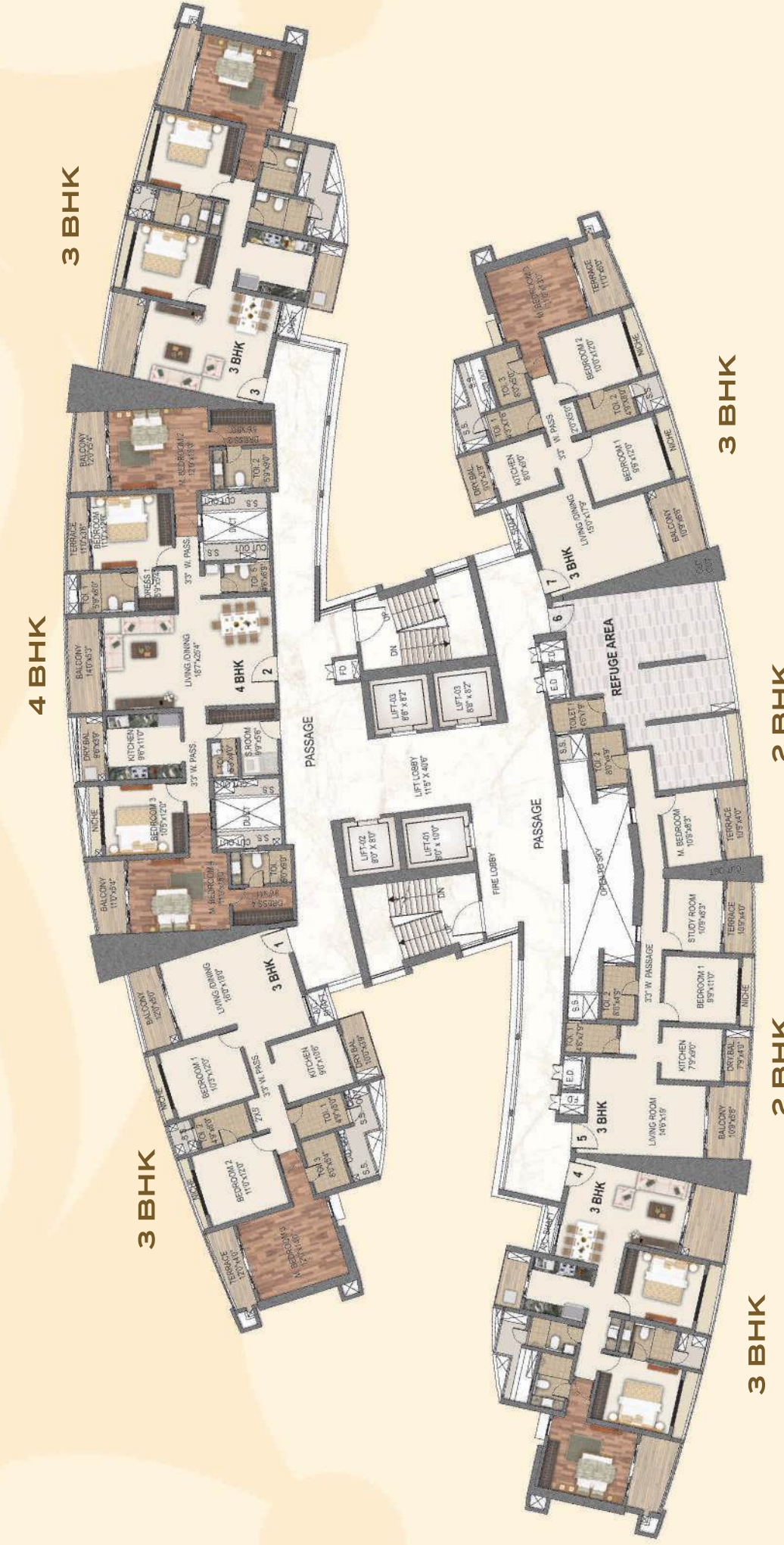


PODIUM VIEW



CITY VIEW

PODIUM VIEW



CITY VIEW





PARADISE MALL

KHARGHAR

PROJECT HIGHLIGHTS

- A WELL-PLANNED COMMERCIAL MALL WITH G+2 STOREYS
- LOCATED AT A PRIME LOCATION IN KHARGHAR
- ARCHITECTURALLY WELL-DESIGNED DESIGNER FAÇADE
- CONNECTED TO SAI WORLD EMPIRE RESIDENTIAL TOWNSHIP OF MORE THAN 2000 FAMILIES
- A WELL-PLANNED LAYOUT FOR MAXIMUM SPACE EFFICIENCY
- SMALL AND MEDIUM SIZED ENTERPRISES & ANCHOR SHOWROOMS
- 24*7 CCTV CAMERA SURVEILLANCE
- POWER BACK-UP FOR ALL SHOPS AND COMMON AREAS
- 14 FT. FLOOR HEIGHT



COMPLETED PROJECTS

LIFESTYLES THAT STAND AS ELOQUENT TESTIMONIALS TO PERFECTION



SAI SPRING KHARGHAR
G+29 Storeyed Tower

SAI CRYSTALS KHARGHAR
G+30 Storeyed Tower with 2 Wings

SAI SOLITAIRE KHARGHAR
G+30 Storeyed Tower

SAI WONDER KHARGHAR
G+18 Storeyed Tower

SAI MOKSH KHARGHAR
G+22 Storeyed Tower

SAI MIRACLE KHARGHAR
G+30 Storeyed Tower with 2 Wings



SAI JEWEL KHARGHAR
G+18 Storeyed Tower

SAI MANNAT KHARGHAR
G+26 Storeyed Tower

SAI RIVERDALE TALOJA
G+19 Storeyed Tower with 2 Wings



SAI FORTUNE ULWE
G+13 Storeyed Tower

SAI SAHIL ULWE
G+12 Storeyed Tower

SAI GANGA ULWE
G+13 Storeyed Tower

SAI SAPPHIRE ULWE
G+7 Storeyed 2 Towers with four wings

SAI HARMONY ULWE
G+7 Storeyed Tower with 4 Wings

ONGOING PROJECTS

LANDMARKS POISED TO BECOME BENCHMARKS



SAI WORLD DREAMS DOMBIVLI
18 Acre Residential & Commercial Township

SAI WORLD CITY PANVEL
32 Acre Mega Township

SAI SUN CITY UPPER KHARGHAR
27 Acre Township



SAI PLATINUM KHARGHAR
G+33 Storeyed Tower

SAI WORLD LEGEND KALYAN NX
8 Acre Legendary Lifestyle

SAI WORLD RETREAT LONAVALA
Exclusive 3 BHK Duplex Villas



SAI SYMPHONY KHARGHAR
G+27 Storeyed Tower

SAI AARADHYA KHARGHAR
G+22 Storeyed Tower

SAI ICON KHARGHAR
G+14 Storeyed Tower

PARADISE GROUP
**PERFECT PAST, PRESTIGIOUS PRESENT,
PROGRESSIVE FUTURE**



OUR PRESENCE

KHARGHAR | UPPER KHARGHAR | PANVEL | DOMBIVLI | KALYAN NX | LONAVALA

It's been a long yet fruitful journey for Paradise Group. We began more than three decades ago with a clear aim of providing lavish and appealing spaces for all to dwell. We have come a long way after constructing more than 125 successful projects across Navi Mumbai as of today's date. This rendezvous of more than 33 years has made us a team of highly experienced construction experts. Keeping abreast with the latest technology and implementation of world-class techniques are the reasons why our structures are not just luxuriously designed marvels, but also perfect specimens of 'beauty with quality'.

With structures that are a beautiful mix of high-end luxuries and modern amenities and pose an elegant touch of culture, we have attempted to make this world a better place to live in. Our past has been glorious and made us proud in constructing 5 Million Sq. Ft. of land area that gave our customers best places to live an enhanced life. At present we are developing over 12.5 Million Sq. Ft. of land area across prime locations of Navi Mumbai and MMR like Kharghar, Upper Kharghar, Panvel, Kalyan NX, Dombivli and Lonavala providing highly innovative, state-of-the-art construction for the classes as well as the masses. With an extremely progressive attitude, today we are forging ahead towards a bright future with a massive land bank of another 12.5 Million Sq. Ft. of through which we are committed to bring in a big change in present housing concepts. We are sure that our sincere efforts towards making this world a 'Paradise' will definitely become a pleasant reality in the near future.

